

Save or pave?

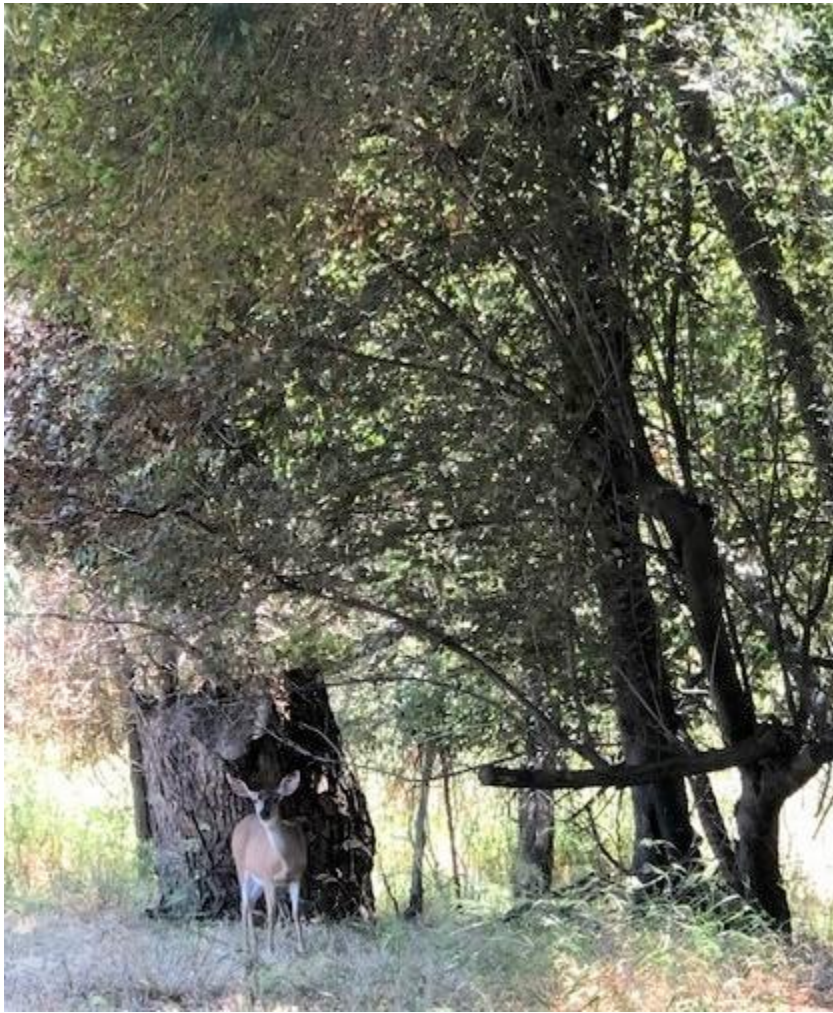














most pictures by Lory Hawley

Woodman! Spare that tree!

First environmental song, 1837 (it's corny)

<https://www.youtube.com/watch?v=MjyD5wZjZ-U>

<https://www.saverubymeadow.org/>

-- Sherman Lewis

Professor Emeritus, Cal State Hayward

President, Hayward Area Planning Association

510-538-3692, sherman@csuhayward.us